

VALVE SIZE	ϕA	ϕB	ϕC	ϕD	E	F	G	H	I	J	K	BODY WEIGHT
mm	mm	mm	mm	mm	mm	mm	mm	mm	mm	mm	DEGREES	Kgs
DN8	13.5	10.3	13.5	10.3	8.8	39.0	18.7	50.8	36.0	58.8	25	0.6
DN15	21.3	18.1	21.3	18.1	12.7	42.6	23.3	50.8	50.0	58.8	25	1.2
DN20	26.9	23.7	26.9	23.7	15.5	54.9	29.1	50.8	58.0	58.8	15	2.0
DN25	33.7	29.7	25.4	22.1	19.3	54.0	32.4	50.8	70.0	58.8	17	3.0
DN40	48.3	44.3	48.3	44.3	26.2	64.4	41.2	50.8	91.0	58.8	25	5.7
DN50	60.3	55.1	60.3	55.1	32.2	84.0	53.6	50.8	108.0	62.8	20	12.1
DN65	76.1	70.9	76.1	70.9	41.1	100.2	66.4	50.8	133.0	50.8	10	19.7
DN80	88.9	83.7	88.9	83.7	47.5	114.1	76.3	50.8	160.0	50.8	25	30.2

The information on this sheet is Private and Confidential and is the property of Crane Process Flow Technologies Limited and must not be published directly or indirectly in any manner whatsoever without the written permission of the Company and must not be used in any way detrimental to their interests.
 © Crane Process Flow Technologies

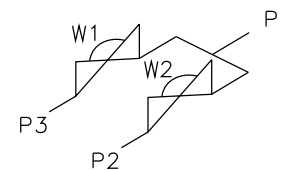
CRANE Process Flow Technologies
 A Crane Co. Company

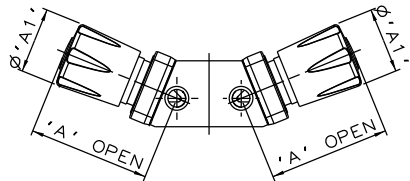
Saunders
 The Science Inside

Title
 SCHEDULE OF LEADING DIMENSIONS FOR
 DN8 TO DN80 2-WAY DIVERTER
 VALVES WITH ISO 1127 S1 ENDS

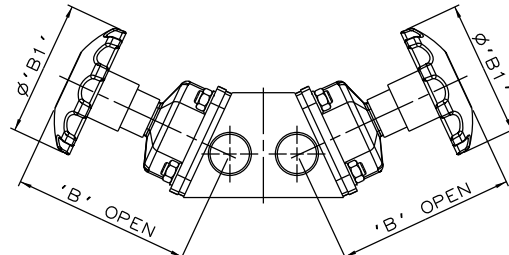
Drawn JRD Date 31.05.12 UNCONTROLLED IN
 Checked RND Date 06.06.13 HARD COPY FORMAT

First Angle Projection Method E DO NOT SCALE Drawing No. WEB-200 Issue. 2

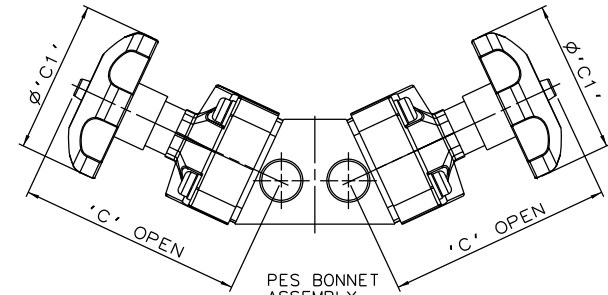




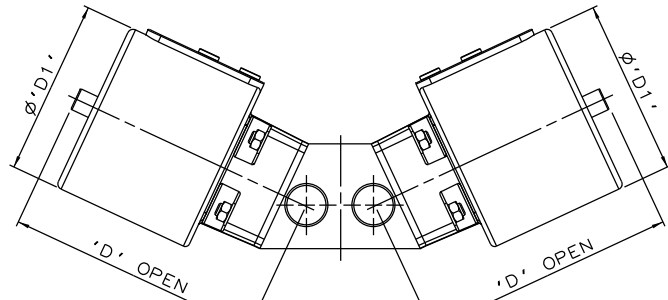
PURE PERFORMANCE BONNET ASSEMBLY



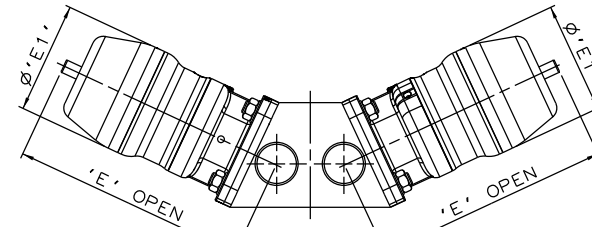
SS NON SEALED BONNET ASSEMBLY



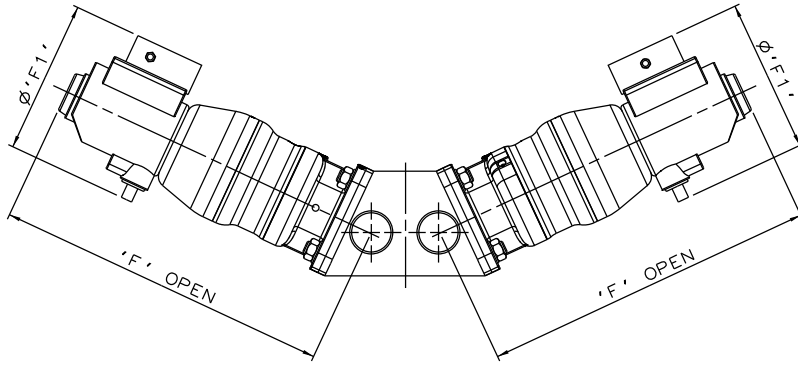
PES BONNET ASSEMBLY



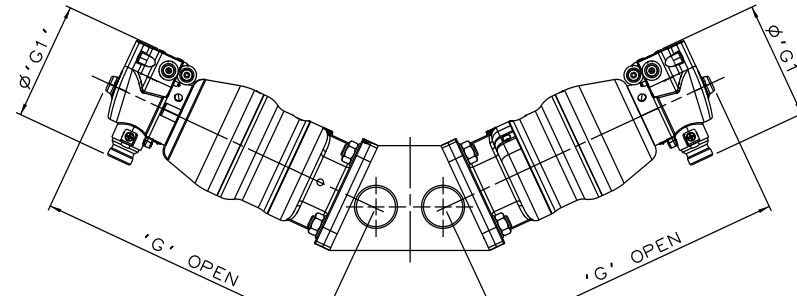
EC ACTUATOR (ALL MODES)



*S360 ACTUATOR



*S360 ACTUATOR WITH I-VUE SENSOR



*S360 ACTUATOR WITH M-VUE SENSOR

The information on this sheet is Private and Confidential and is the property of Crane Process Flow Technologies Limited and must not be published directly or indirectly in any manner whatsoever without the written permission of the Company and must not be used in any way detrimental to their interests.
 © Crane Process Flow Technologies

CRANE Process Flow Technologies
 A Crane Co. Company

Saunders
 The Science Inside

Title
 SCHEDULE OF LEADING DIMENSIONS FOR
 DN8/0.25 TO DN80/3.00 2-WAY DIVERTER
 VALVES WITH BUTT WELD ISO 1127 S1 TUBE ENDS.
 FITTED WITH TOPWORKS OPTIONS

Drawn R1 Date 30.06.16 UNCONTROLLED IN
 Checked RND Date 30.06.16 HARD COPY FORMAT

First Angle Projection Method E DO NOT SCALE Drawing No. WEB-200-ASSY Issue. 1

* DIMENSIONS SHOW MAXIMUM ENVELOPE FOR ALL MODES

VALVE SIZE	A		A1		B		B1		C		C1		D		D1		E		E1		F		F1		G		G1		
mm inch	mm	inch	mm	inch	mm	inch	mm	inch	mm	inch	mm	inch	mm	inch	mm	inch	mm	inch	mm	inch	mm	inch	mm	inch	mm	inch	mm	inch	
DN8	0.25	65.2	2.57	34.0	1.34	N/A	N/A	N/A	N/A	N/A	N/A	N/A	N/A	N/A	N/A	N/A	88.8	3.50	55.0	2.18	187.8	7.39	136.0	5.35	153.8	6.06	103.8	4.09	
DN15	0.50	N/A	N/A	N/A	N/A	87.7	3.45	62.0	2.44	110.7	4.36	62.0	2.44	114.7	4.52	70.0	2.75	138.7	5.46	67.5	2.66	234.7	9.24	136.0	5.35	199.0	7.83	103.8	4.09
DN20	0.75	N/A	N/A	N/A	N/A	90.5	3.56	62.0	2.44	116.5	4.59	62.0	2.44	159.5	6.28	103.0	4.05	166.5	6.56	98.0	3.87	262.5	10.33	136.0	5.35	227.5	8.96	103.8	4.09
DN25	1.00	N/A	N/A	N/A	N/A	113.3	4.46	80.0	3.15	147.3	5.80	80.0	3.15	167.3	6.59	103.0	4.05	175.3	6.90	98.0	3.87	272.3	10.72	136.0	5.35	236.3	9.30	103.8	4.09
DN40	1.50	N/A	N/A	N/A	N/A	162.2	6.39	120.0	4.72	203.2	8.00	140.0	5.51	229.2	9.02	155.0	6.10	228.2	8.98	123.0	4.84	315.2	12.41	136.0	5.35	279.2	10.99	103.8	4.09
DN50	2.00	N/A	N/A	N/A	N/A	184.2	7.25	120.0	4.72	213.2	8.39	140.0	5.51	248.2	9.77	155.0	6.10	271.2	10.68	150.0	5.92	355.2	13.98	136.0	5.35	319.2	12.57	103.8	4.09
DN65	2.50	N/A	N/A	N/A	N/A	234.1	9.22	170.0	6.69	227.1	8.94	140.0	5.51	N/A	N/A	N/A	335.1	13.19	186.0	7.32	415.1	16.34	136.0	5.35	N/A	N/A	N/A	N/A	
DN80	3.00	N/A	N/A	N/A	N/A	258.5	10.18	230.0	9.06	298.5	11.75	250.0	9.84	N/A	N/A	N/A	406.5	16.00	236.0	9.29	479.5	18.88	136.0	5.35	N/A	N/A	N/A	N/A	